

Farm Retirement

AUCTIONEER'S NOTE: Tim & Lyle have decided to discontinue their farming operation near Milaca, MN. All row crop and livestock equipment will sell. Large sale with live online bidding available. Major equipment will sell at 10:15AM. Registration, terms, & details at SteffesGroup.com.

AUCTION



WEDNESDAY, FEBRUARY 27 | 10AM 2019



TRACK TRACTORS

2011 Case-IH 500 Quadtrac, luxury leather cab, cab suspension, powershift, 4 hyd., 1000 PTO, Pro 700 display, 372 receiver w/HP/XP unlock, HID lights, extra HID cab lights, tow cable, front weight, clearview caps, 30" tracks, 1,924 hrs., S/NZBF126284
2004 Case-IH STX450 Quadtrac, buddy seat, 4 hyd., case return, 1000 PTO, front/rear diff lock, cloth interior, HID lights, engine mud screens, tow cable, clearview covers, 30" belts, 4,480 hrs., S/NJEE0104612, undercarriage completely gone through Fall 2018
2013 Caterpillar MT765D, CAH, cab suspension, powershift, 5 hyd., 3 pt., quick hitch, PTO, HID lights, full set of front weights, 30" tracks, 2,932 hrs.

4WD TRACTORS

2011 John Deere 9430, deluxe cab, active seat, buddy seat, powershift, 6 hyd., 1000 PTO, high flow hyd., front & rear power diff lock, GreenStar ready, HD gudgeon, Field Vision HID, beacon lights, premier light pkg., tow cable, (22) front weights, 800/70R38 hub dual on 10-bolt rims 2,642 hrs., S/N1RW9430PKBP024048
1983 John Deere 8450, CAH, 3 hyd., 3 pt., PTO, 20.8-34 hub duals, on 10-bolt rims, 8,795 hrs., S/N002214



MFWD TRACTORS

2014 John Deere 6150M, deluxe cab, buddy seat, air seat, Power Quad Plus, left hand reverser, 3 hyd., 540/1000 PTO, 3 pt., double cab door, tinted glass, H360 loader, joystick controls, 3rd valve grapple, global mounts, single pt. hookup, cold start pkg., 380/85R30 front tires, 18.4-42 tires, 3,249 hrs., S/NL06150MPEG800946
2006 John Deere 8530, CAH, deluxe cab, buddy seat, IVT, ILS, 5 hyd., 3 pt., quick hitch, 1000 PTO, auto steer ready, diff lock, HID lights, beacon lights, extra cab lights, cold weather pkg., front fenders, (22) front weights, wheel weights, Goodyear 380/85R38 front tires w/duals, Goodyear 380/90R54 rear tires w/10-bolt duals, 5,570 hrs., S/NRW8530D00667
2003 John Deere 7810, CAH, power quad w/creeper, 3 hyd., 3 pt., 540/1000 PTO, diff lock, 3rd valve, Quicke quick tach loader, quick tach bucket, general purpose bucket, joystick controls, extra cab lights, extra lights & mirrors, front fenders, rear wheel weights, Mitas 420/85R30 front tires, Mitas 480/80R42 rear tires w/10-bolt duals, 14,123 hrs., S/NRW7810H080263

2WD TRACTORS

1978 John Deere 4440 quad range, 3 hyd. converted to Pioneer, 3 pt., 540/1000 PTO, K&M step kit, front fenders, (10) front weights, 18.4 42 tires, 13,287 hrs., S/N10537, engine over haul at 10,000 hrs.
1970 John Deere 4020 wide front, open station, diesel, syncro, 2 hyd., 3 pt., 540/1000 PTO, side console, K&M step, rock box, 10:00-16.4 front tires, New 18.4-34 tires, 5,563 hrs., S/N231905R



COMBINES

2010 Caterpillar Lexion 585R, PRWD, Auto Contour, auto pilot, Ag Leader Y&M w/mapping, Cebis monitor, HP feeder house, folding power hopper top, 3D sieves, single pt. hookup, Goodyear 620/75R26 tires, 36" tracks, 1,464 sep. hrs., 2,211 engine hrs., S/N57801148
2005 Caterpillar Lexion 575R, PRWD, Auto Contour, Cebis monitor, power hopper top, 3D sieves, single pt. hookup, Michelin 750/65R26 tires, 36" tracks, 2,260 sep. hrs., 3,845 engine hrs., S/NCOL00575C57500111

HEADS

2007 Geringhoff Rota Disc chopping corn head, 12x22", hyd. deck plates, flex shafts, ear savers, single pt. hookup, Caterpillar hookups, S/N93807
2006 Geringhoff Rota Disc chopping corn head, 12x22", hyd. deck plates, flex shafts, ear savers, single pt. hookup, Caterpillar hookups, S/N93456
2009 Claas F535 flex head, 35", Maxi-Flex, hyd. fore/aft, flex shaft, S/N44100716
2005 Claas F530 flex head, 30", hyd. fore/aft, flex shaft, folding snouts, S/N43801419

PLANTERS

2011 Case-IH 1260, 36x22", central fill, hyd. variable rate drive, pneumatic down pressure, individual Tru Count row clutches, 750 gal. liquid fertilizer tank, 20/20 drop tubes, 20/20 Seed Sense monitor, Camoplast track system, Redball monitors, S/N1260YBS007189
2003 John Deere 1790, CCS, 24x22", 2 pt., ground drive pump, pneumatic down pressure, 500 gal. tank, liquid fertilizer, seed firm, self-loading Unverferth belt conveyor, 20/20 Seed Sense monitor, less than 10,000 acres, S/NA01790D705113

TILLAGE EQUIPMENT

DMI 9300 disc ripper, 9 shank on 30" spacing, 9" points, 9" covering boards, no lead shanks, rear disc leveler
Melroe 923 plow, 8 bottom, on land
Rite-Way 4300 land roller, 40", S/N10-43-2031
2006 John Deere 980 field cultivator, 44-1/2", walking tandems across, 3-bar harrow, needs work
DMI Tigermate II field cultivator, 50", 3-bar harrow
John Deere 980 field cultivator, 55", knock-on sweeps, single pt. depth, 3-bar harrow
Spike tooth harrow, 16", for DMI 730C ripper



CONVENTIONAL TRUCKS

2001 Freightliner Century integrated sleeper, N14 Plus Red Top, auto shift, Jake brake, air ride, air slide 5th wheel plate, diff lock, cruise, dual fuel tanks, headache rack, 242" WB, 11R22.5 tires on front aluminum rims, steel inside rims, 831,060 miles, S/N1FUJA3BD81LH37672
1997 Volvo VNL 64T day cab, 14 liter Detroit, 9 spd., air ride, sliding 5th wheel, wet kit, 1/4 fenders, 154" WB, 11R22.5 tires on all steel rims, S/N4VGVJDF5V857597
1996 Peterbilt 377 tandem axle day cab, 14 Liter Detroit, 10 spd., Jake brake, air ride, diff lock, cruise, 20' box & hoist, hyd. end gate, 228" WB, 11R22.5 front tires on aluminum rims, 295/75R22.5 tires on aluminum outside rims, 10,000-20 tires on rear air lift tag, 124,000 miles, S/N1XPCDR8X8TN412440
1995 Volvo day cab, L10 Cummins, 10 spd., 5th wheel ball, 150" WB, 22.5 tires on steel rims, S/N4V1JBAME5SR836235
1995 Freightliner Western Hauler 505 Cummins, diesel, 7 spd., headache rack, 5th wheel ball, 265/75R22.5 tires on aluminum rims, 173,000 miles, S/N631807
1985 Ford 9000 day cab, Cummins Big Cam III engine, 10 spd., spring ride, 11R22.5 tires on steel rims, 379,544 miles

PICKUPS

2007 Dodge 2500 quad cab, diesel, automatic, 4WD, steel flatbed, 300,000 miles
2001 Ford F250 Lariat, long box, 7.3 liter, automatic, 4WD, leather, toolbox, LT265/75R16 tires on aluminum rims, 263,710 miles, S/N1FTNW21F01EB74397
2000 Ford F350 quad cab, long box, 7.3 liter, automatic, 4WD, power windows & locks, running boards, 5th wheel ball, 265/75R16 tires on aluminum rims, 309,290 miles, S/N1FTSW31F2YEB04239
2002 Ford F150 XLT, ext. cab, Triton gas, automatic, 4WD, poly bed liner, 265/70R17 tires, S/N50072
1996 Chevrolet Cheyenne 3500 reg. cab, gas, automatic, 4WD, 7'x8' Bradford Built all steel diamond plate flatbed, snow plow mounts, 235/85R16 tires, 176,485 miles

TRUCK ATTACHMENTS

Meyers snowplow, 8', Chevrolet mounts, straight blade
Pickup fuel tank, 12v, L-shaped
Pickup toolbox, aluminum

20274 Hwy 169, Milaca, MN 56353

LOCATION: From Milaca, MN, 6 miles north on Hwy 169.

GRAIN CARTS & GRAVITY BOX

2010 J&M 1150 Grainstorm grain cart, Storm Track system, 1000 PTO, hyd. spout, scale, roll tarp, front & rear camera, front & rear windows, 36" tracks, S/N2120
2009 Parker 938 grain cart, 1000 PTO, hyd. spout, extension w/ tarp, camera system, front/rear windows, Trelleborg 900/60R32 tires, S/NB25160138
Parker gravity box, on Minnesota 10-ton running gear

HOPPER BOTTOM TRAILERS

2005 Merritt 21XMVT hopper bottom trailer, 42'x96"x66", ag hopper, air ride, roll tarp, single spd. traps, front/rear ladders, 22.5 tires on outside aluminum rims, ripped tarp, S/N1MT2P42205H014782
2004 Timple hopper bottom trailer, 41'x66"x102", air ride, roll tarp
1993 Jet tandem axle hopper bottom trailer, 30'x96"x66", spring ride, roll tarp, front/rear ladders, 24.5 tires on steel rims, S/N9069

LIVESTOCK TRAILERS

1993 Wilson PSDCL-302 livestock pot semi trailer, 53'x102", all aluminum, spring ride, 3/4 dog house, California spread axle, 295/75R22.5 tires on all aluminum rims, S/N 1W1UCS2M4PD515273, 70% floors, current DOT
1997 Calico tandem axle 5th wheel livestock trailer, 12'x6', spring ride, (3) horse slant, left hand door, 15" tires, S/N00611
1992 Titan tandem axle 5th wheel livestock trailer, 6'8"x24', (2) center gates, rear slider, 235/85R16 tires, S/N1T9G24207N1211575
2000 Titan tandem axle livestock trailer, 20'x7', all steel, center gate, rear slider, spray on rust proof, 235/85R16 HD tires
1988 Barrett tandem axle livestock trailer, 8'x30', all aluminum, (2) center gates, rear slider, 235/75R17.5 tires, new tires in 2018
1988 Barrett tandem axle livestock trailer, 7'x24', all aluminum, center gate, rear slider, 235/85R16 tires



More on Back...

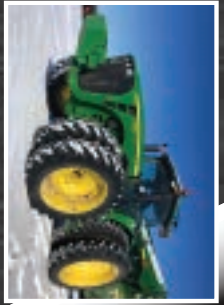
G-BAR FARMS | For information contact Tim 612.799.7306, Lyle 612.221.0475, Steffes Group at 320.693.9371, Eric Gabrielson 701.238.2570, or Randy Kath 701.429.8894



SteffesGroup.com

Steffes Group, Inc., 24400 MN Hwy 22 S, Litchfield, MN 55355 | 320.693.9371





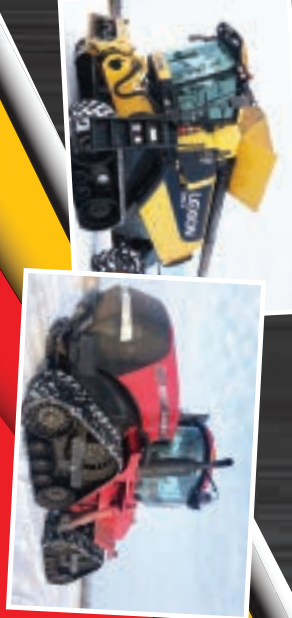
WEDNESDAY, FEBRUARY 27 | 10AM

AUCTION

Form Retirement

20274 Hwy 169, Milaca, MN 56353

LOCATION: Form Milaca, MN, 6 miles north on Hwy 169.

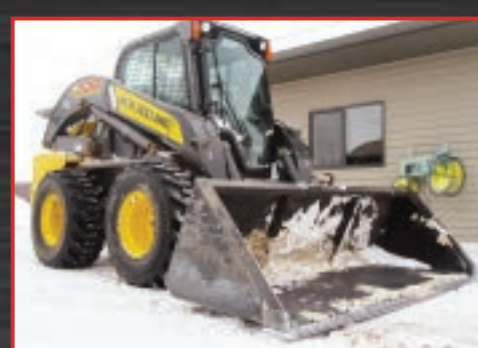


WEDNESDAY, FEBRUARY 27 | 10AM

AUCTION

Form Retirement

Steffes Group, Inc.
24400 MN Hwy 22 S
Litchfield, MN 55355



OTHER TRAILERS

2012 Hull tandem axle bumper hitch dump trailer, 14'x7', self-contained 12v hyd. pump, 235/80R16 tires on 8-bolt axles
2005 Felling FT 20-2 5th wheel trailer, beavertail, triple ramps, electric brakes, walking tandems, 235/80R16 tires w/duals, S/N5FTDE342651023709
1999 Trail King TK-70Mg detach trailer, 48', 10' top, 29' well, 9' rear, air ride, sliding out riggers, mechanical detach, 22.5 tires rubber on outside aluminum

1991 Transcraft heavy haul step deck trailer, 48'x96", 11' top deck, air ride, hay side inserts, spread axle, 22.5 tires on steel rims
Americas Industrias 440 tandem axle bumper hitch header trailer, 40'
Shop-Built single axle bumper hitch header trailer, 30', lights

SPRAYER & SPREADER

2003 John Deere 4710 self-propelled sprayer, 90' boom, 1,000 stainless steel tank, 3-way nozzle, quick connect load, GreenStar ready, Starfire 3000, SF2 unlock, 2600 display, Swath Control Pro, hyd. leveling, hyd. tread adjust, flow meter, solution tank, foamer, fenders, adjustable axles, 380/90R46 tires, duals on rear, 19,552 total acres, 2,166 hrs., S/NN4710X004325
Terragator 1803 air spreader, Cummins, 48'x96", 11' top deck, air ride, hay side inserts, spread axle, 22.5 tires on steel rims
Americas Industrias 440 tandem axle bumper hitch header trailer, 40'
Shop-Built single axle bumper hitch header trailer, 30', lights

GRAIN HANDLING EQUIPMENT

Unverferth 3750 tri-axle bumper hitch seed tender, Honda GX engine, self-loading, scale, corded remote, torsion bar axle, 235/80R16 tires
Alloway 1410 auger, swing hopper, hyd. hopper drive, hyd. lift, 540 PTO, on transport, needs work
New Idea all crop elevator, 40', 540 PTO, fold down pan, on transport

HAY EQUIPMENT

2015 John Deere 569 round baler, 5x6, 1000 PTO, MegaWide Plus pickup, hyd. pickup, Cover-Edge net wrap or twine tie, bale kicker, Mega Tooth, windrow depressor, pickup gauge wheels, 21.5-11.1 tires, 5,000 bales
John Deere 336 small square baler, 540 PTO, equal angle hitch, thrower, S/N135916
2005 New Holland 1431 mower conditioner, 2 pt., 1000 PTO, hyd. swing, rubber roll conditioner, 31-13.50-15 tires, S/N1191742
John Deere 945 mower conditioner, 14-1/2', 2 pt., impeller conditioner
Kuhn GF5202TMA tedder, 540 PTO, wing fold, quad rotor, S/ND4445
H&S v-rake, 12-wheel, hyd. lift & fold, S/N603415
(2) Throw rack, on 4-wheel running gear

FEED WAGONS

Kuhn Knight Vertimaxx VT144 vertical TMR mixer, 440 cu. ft., 540 PTO, twin screw, left hand apron discharge, front unload, 4' ext. on fold down, rubber spill guard, light kit, DigiStar EZ2500V scale, single axle, 385/65R22.5 tires, S/NAO244, single owner
Schwartz 180 feed wagon, 540 PTO, 4' fold down apron discharge
Richardton 750 dump cart w/roof, 385/65R22.5 tires
Richardton 700 dump cart w/roof, 4-wheel running gear, military 11:00-20 tires
Richardton 700 dump cart w/roof, pull-type tandem axle running gear

FORAGE PROCESSING

2002 John Deere 3975 pull-type forage harvester, 1000 PTO, electric spout, hyd. tongue, preservative applicator, Dura Drum knife drive, equal angle hitch, rear hyd., axle extension, 11L15 tires, S/N110216, includes New knives
John Deere corn head, 3x22", for John Deere 3975
John Deere hay head, 6', for John Deere 3975, S/N882398

LIVESTOCK EQUIPMENT

2007 Mack DM6865 tandem axle spreader truck, Mack diesel engine, 13 spd., Mohrlang XHD-21 spreader, 21' (S/N2154), triple beater, triple apron, poly sides, hyd. end gate, 48x31:00x20 tires, 4,779 hrs., 542,866 miles
Kuhn Knight 8132 Pro Twin slinger manure spreader, large 1000 CV PTO, hyd. diverter, tandem axle, 21.5-16.1 tires
John Deere 780 tandem axle manure spreader, 1000 PTO, hyd. push, single beater, hyd. end gate, poly floor & sides, 16.5-16.1 tires
For-Most livestock working chute, manual squeeze, self-locking head gate, nurse gates, rapid exit side door, vet doors
Stur-D-Built portable livestock loadout chute, self-contained hyd. unit, adjustable height, torsion axles
All hyd. livestock working chute, front & rear hyd. doors, drop down vet doors, hyd. adjust squeeze, self-contained hyd. res. & pump
Power River livestock working chute, manual squeeze, manual head gate, rapid exit, side door, nurse gates, drop down vet doors, rear vertical gate
Cattle working chute, self-locking head gate, drop down vet doors, creep door, rear vertical door, rapid exit
Portable load chute, on transport
For-Most palpation cage, double door
(4) For-Most calving pens w/head chutes
Shop-Built Adjustable alleyway, well pipe
For-Most self-locking head gate
(5) Polydome calf huts, round
(3) Verns creep feeders, drop down creep gates, adj. feed flow, on transport
Werkmeister creep feeder, drop down gates, adj. feed flow, on transport
EZ Way cattle mineral feeder w/insecticide applicator
(4) Ameriag mineral feeders
Round bale horse feeder
Turned rubber tire feeders
(13) Fence line feed bunkers, 20', belt bottom
(5) Round bale feeders
Ritchie livestock waterer, double sided, stainless steel pan
Livestock water tank, poly
(16) Freestanding cattle panels, 24'
(10) Continuous fence panels, 20'
(20) Interlocking corral panels
Numerous gates & panels
Electric fence supplies
(1,000) Electric fence posts
(25) Rolls of electric wire, steel & poly
(300) Steel posts
Treated wood posts

OTHER FARM EQUIPMENT

John Deere blade, 12', bolt-on cutting edge, silage guard, end plates, John Deere 8450 mounts
Shop-Built water tender, 1,300 gal., 2" transfer pump, on tandem axle bumper hitch trailer, 11L15 tires
Rotary mower, 7', pull-type
Degelman R570S reel-type rockpicker, hyd. drive, pull-type, S/N16073

OTHER FARM EQUIPMENT

John Deere 27 stalk chopper, 6x30", 1000 PTO, 4-gauge wheels
Lorenz snowblower, 2 stage, twin auger, hyd. spout, 3 pt., 540 PTO
Quickie pallet forks
Quickie bale spear
Tow behind tank, 1,600 gal., on tri-cycle transport

SKID STEER LOADER & ATTACHMENTS

2015 New Holland L228 skid steer loader, CAH, air ride seat, 2 spd., radio, HiFlow, hyd., quick tach, pilot controls, New Holland 78" general purpose bucket, 14-17.5 tires, 1,206 hrs., S/NJAFOL228TFM402678
2015 New Holland L228 skid steer loader, CAH, 2 spd., hyd. quick tach, ISO controls, radio, 78" bucket, New 14-17.5 tires, 1,304 hrs., S/NJAFOL228TFM402678
2013 PD45132 hyd. post pounder, flat face hyd. couplers, for steel posts, S/N13004
Quick tach mover, skid steer loader mount
Snow bucket, 7', quick attach, skid steer loader mount, S/N1035816
Virnig pallet forks, 48", skid steer loader mount, S/N68746
Bale spear, skid steer loader mounts
Quick Attach brush cutter, 72", high flow, skid steer loader mount, S/N1035616
Manure bucket, 72", skid steer loader mount
(2) Bale spear, global mounts
Material bucket, skid steer loader mounts
Tine grapple bucket, skid steer loader mounts
Pallet forks, skid steer loader mount

ATV

2017 Polaris XP ProStar 900 H.O. side-by-side, 4WD, full soft cab, manual dump bed, winch, rear receiver, 1,878 miles, S/N3NRSTE876HG967554
2008 Polaris Ranger XP side-by-side, 4WD, Camo Edition, wind shield, manual dump box, winch, 8,076 miles, S/N4XAH68A694733064
2005 Honda Rubicon ATV, 4WD, front/rear racks

LAWN TRACTOR

John Deere 430 riding lawn tractor, John Deere diesel, hyd. lift, 60" deck, S/N430X316747

SHOP EQUIPMENT

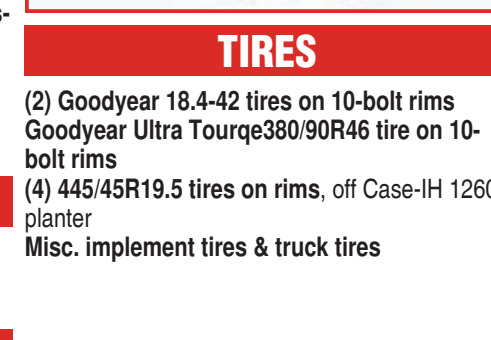
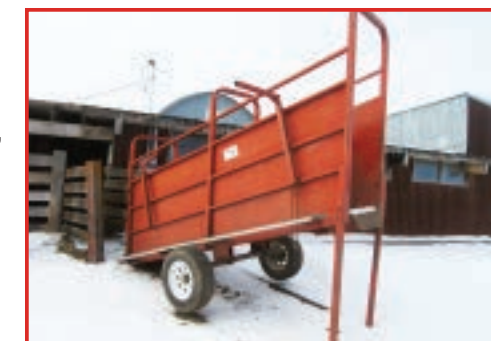
Kato light generator, 25kw, 1 phase, 540 PTO, on 2-wheel transport, S/N163
Car hoist, 2-post, hyd. lift
Magna Force MVS048055 vertical air compressor, 80 gal., 6 hp., 1 phase, 2 stage, S/N20394
Miller Matic mig welder, 212 auto set, 1 phase, S/N50182
Def tank, 220 gal., w/pump

FUEL BARRELS & TANKS

Fuel barrel, 2,000 gal.
Fuel barrel, 1,000 gal.
(20) Pallet tanks, 250 gal.

PARTS

Induction cone w/transfer pump
Case-IH 1260 planter axles
(2) Case-IH 1260 markers, off Case-IH 1260 planter
Liquid fertilizer tank, 300 gal., for John Deere 8000 tractor



(2) Goodyear 18.4-42 tires on 10-bolt rims
Goodyear Ultra TourG380/90R46 tire on 10-bolt rims
(4) 445/45R19.5 tires on rims, off Case-IH 1260 planter
Misc. implement tires & truck tires

PRE-SORTED
FIRST CLASS
US POSTAGE
PERMIT #416
FARGO, ND

